

# RELAY ALARM ADAPTOR

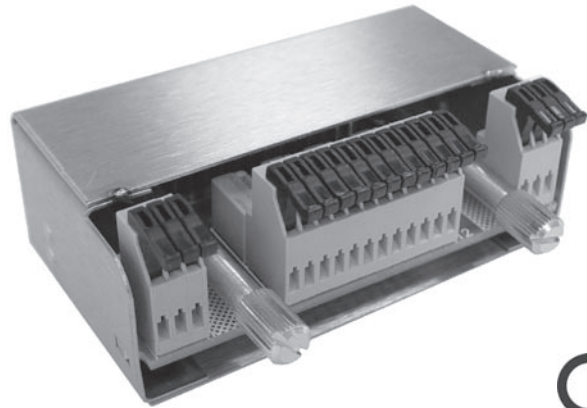
## RELAY CONTACT OUTPUTS FOR PowerCassette® TPCM, TPCMQ, TPCP & TSG Rack Units

### DESCRIPTION

The alarm adaptor module plugs directly into the 25 way D-Type signal connector at the rear of a Radian Series or Sigma Series power shelf and converts the DC Good signal provided by each power module to a Form-C volts-free relay contact output.

The module also provides connections to allow daisy chaining of the share bus between multiple parallel connected shelves as well as remote sense connections.

All external connections to the module are made via spring clip terminals, eliminating the need for any tools other than wire strippers.



### SPECIFICATIONS

#### RELAY RATINGS

Switching Capacity (resistive load).....	2A 30VDC / 0.6A 125VAC
Switching Power (resistive load) .....	60W / 75VA max.
Switching Voltage .....	110VDC / 125VAC max.
Switching Current .....	2A max.
	10uA 10mVDC min.
Isolation Voltage .....	1500Vrms for 1 minute

#### ENVIRONMENTAL

Operating Temp. Range .....	-40°C to +70°C
Humidity.....	0% to 95%, Non-Condensing
ESD .....	Bellcore GR-1089-Core and EN61000-4-2
MTBF, 35°C (Bellcore).....	1.6M Hours

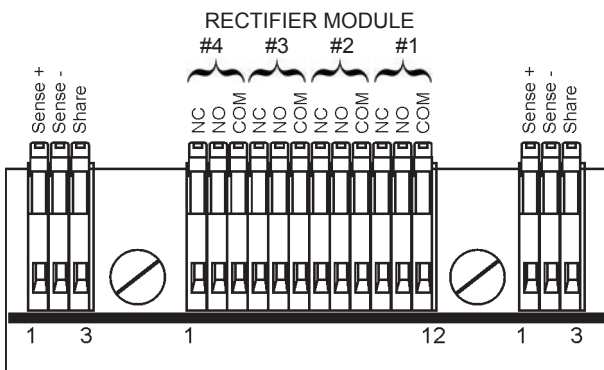
#### PHYSICAL SPECIFICATIONS

Case Material .....	Steel
Dimensions, Inches (mm).....	1.14 H x 2.99 W x 2.24 D (29 x 76 x 57)
Weight .....	0.22 lbs. (0.1 kg.)

### SAFETY STANDARDS

UL60950-1  
 CSA22.2, No. 60950-1  
 EN60950-1

### CONNECTIONS



### ORDER CODE: 009-1005-0000

#### INSTALLATION & OPERATION

1. The maximum wire size that can be accepted by the spring clamp terminals is 22AWG.
2. Two sets of connections for remote sense and share are provided to allow for multiple power shelves connected in parallel.  
 When the remote sense facility is being used with multiple shelves it is recommended that the sense terminals are linked between individual shelves and only one pair of remote leads connected to the remote sense point.
3. Compatible with all standard versions of power shelf models TPCMR1U3, TPCMQR1U3, TPCPR1U3 & TSGR1U4.

relay alarm adaptor-ds-revB-11/06/06

[www.unipowercorp.com](http://www.unipowercorp.com) or [www.powerspeed.com](http://www.powerspeed.com)